



2019  
Report

# COMMUNITY ECOLOGY REPORT

BY LATINO COMMUNITY FUND  
[www.latinocommunityfund.org](http://www.latinocommunityfund.org)

# ACERCA DE LATINO COMMUNITY FUND

## ABOUT LATINO COMMUNITY FUND

Latino Community Fund of Washington State (LCF) is an organization that strives in cultivating new leaders, supporting cultural and community based non-profits organizations, and improving the quality of life for all Washingtonians. To achieve its mission and address the needs of Latinos, LCF programs create a vibrant community through civic engagement, healthy families, arts and culture.

## MISSION AND VISION

### GUIDING PRINCIPLES

The members of the Latino Community Fund believe in:

**A Strength and Asset-Based Approach** – We pledge to start every process by focusing on what is best in people and communities and then building on those assets (e.g.: people, culture, existing programs, business, money, etc.) we already have.

**Participatory Processes** – We value efficiency, transparent decision-making, and devoted leadership. We welcome people of all incomes, races, ethnic backgrounds, languages, sexual orientations, genders, and abilities to participate in Latino Community Fund processes, activities and events.

**Latino-Led and Latino Accountable Work** – We consciously accept the duty to solve the challenges we face. Latinos must be active participants in the development of our future.

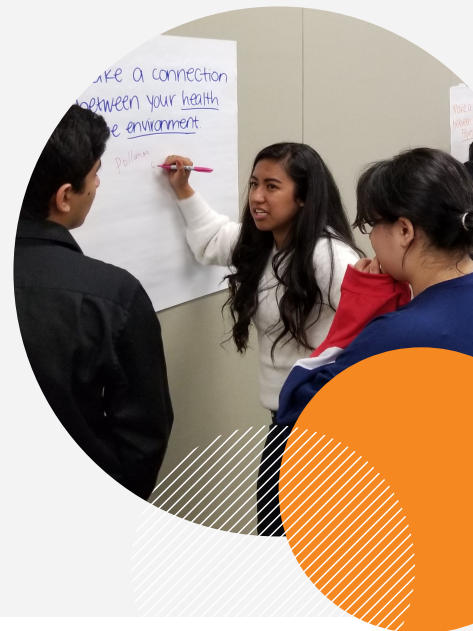


# RESEARCH OVERVIEW

This study was funded by the Washington State's Department of Ecology in order to generate additional information from the community on waste management to better inform and provide additional prevention steps for diverse communities. The study focused on outreach and engaging the Latino community to initiate partnerships and working relationships among low-income leaders and stakeholder groups in highly-impacted communities of Yakima County. The goal was to support further capacity to convene and mobilize local residents in addressing nearby toxic sites and other environmental hazards.

## TAKING A COMMUNITY PARTICIPATORY APPROACH:

**Community-based participatory research (CBPR)** is a collaborative approach to research that equitably involves community members, organizational representatives, and researchers in all aspects of the research process and in which all partners contribute expertise, share decision making and exercise ownership.



## THE TOP 5 COMMUNITY ENVIRONMENTAL HEALTH ISSUES OF CONCERN:



Clean drinking water and health effects of water pollution



Recycling and composting



Reducing use of toxic production



Climate change



Pesticides

# HOW WE ACHIEVED THIS

## A PARTICIPATORY APPROACH

Through this research project LCF facilitated a participatory approach to bring together government officials, state and community leaders where they collectively drew their vision of community waste management.

## MOBILIZING YOUTH

LCF mobilized and involved local youth as volunteers, especially engaging them to serve in leadership roles during the implementation of activities, such as being moderators and leaders in community dialogues implemented in different locations across Yakima County.

## COMMUNITY DIALOGUES

In October - December 2018, LCF hosted **4 community dialogues** in Granger, Sunnyside, and Yakima with Latino communities, local nonprofit organizations, community leaders, volunteers, and state organizations. Workshops brought together 25-50 community members per workshop.



Photo Credit:  
Merivet Lombera



*"My biggest health/safety concern for my children would be the malpractice of pesticide use and the exposure of hazardous conditions out in the general public."*



# OVERVIEW OF YAKIMA COUNTY

Latino Community Fund hosted a series of community dialogues in Yakima County, outreached to community through phone banking, surveys, canvassing, and emails. Yakima County has a high Hispanic population in Eastern Yakima which includes City Council districts 1 and 2.

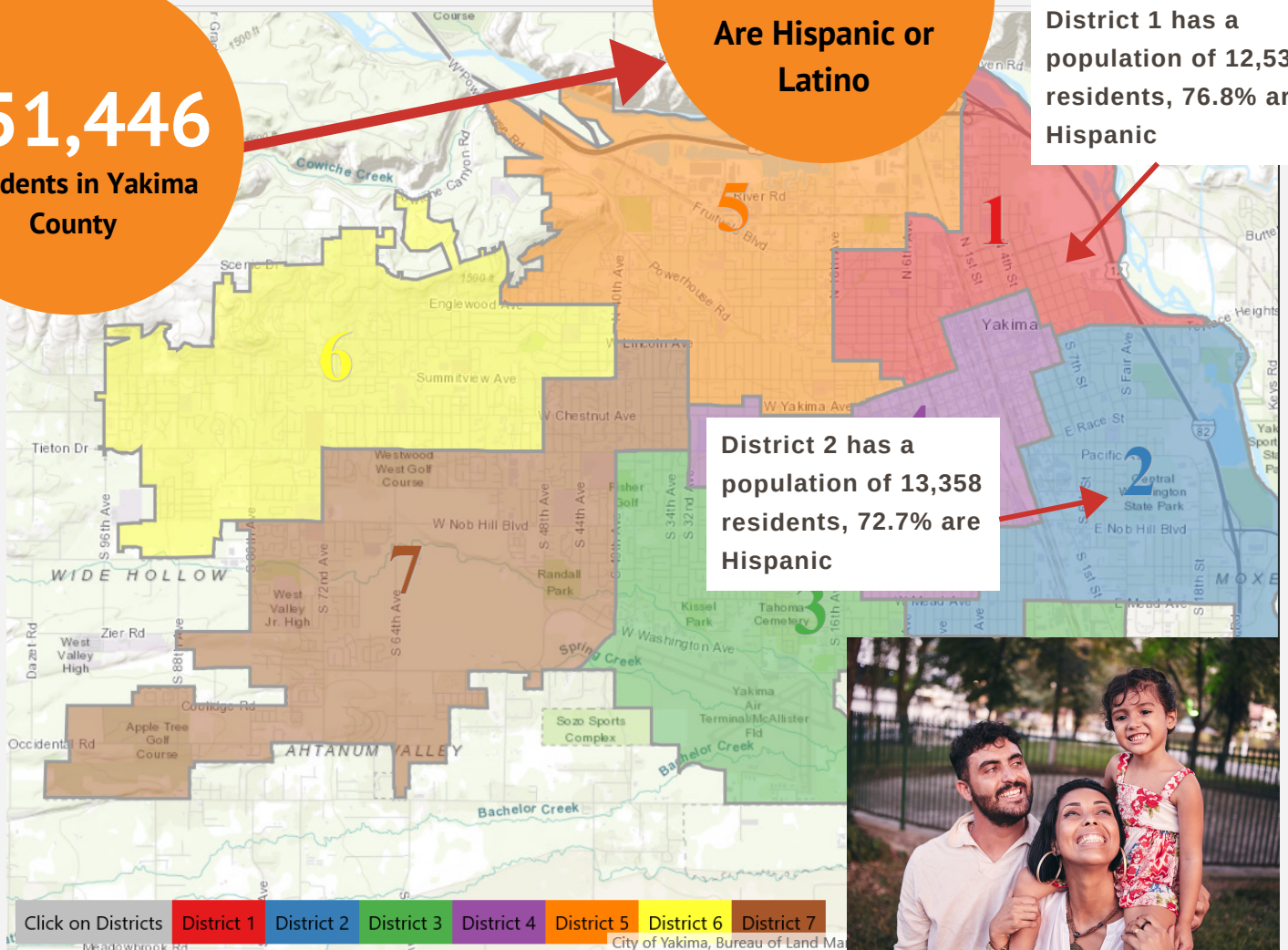
## YAKIMA POPULATION

**251,446**  
Residents in Yakima  
County

**49.43%**  
Are Hispanic or  
Latino

District 1 has a  
population of 12,533  
residents, 76.8% are  
Hispanic

District 2 has a  
population of 13,358  
residents, 72.7% are  
Hispanic



# COLLECTING DATA

Latino Community Fund identified communities in locations needing resources to address issues: access to clean drinking water and health effects of water pollution; recycling and composting; climate change; and reducing the use of toxic products at home. We developed a coalition made up of state, federal, and local agencies to share information and to pinpoint locations to outreach to the Latino community. We hosted the first coalition networking meeting on May 19, 2019 where members collaborated on survey questions and identifying important resources to offer the community.



## QUESTIONS FORMULATED BY THE COMMUNITY PARTNERSHIP COALITION:

- 1** What do Latinos need to support the well-being of their families, practically in terms of environmental factors of waste and pollution of land, air, water, and climate change?
- 2** What is your biggest health/safety concern for your children?
- 3** What type of information would Latino families like to receive from government agencies that support your family's well-being?
- 4** How do Latino families prefer to receive information that supports their families' well-being from government agencies?
- 5** What can government agencies do to improve the well-being of Latino families through waste and pollution issues impacting the community thorough land, air, water, and climate change?
- 6** What activities in the Yakima community do you think may have a negative impact on the environment?

# COLLECTING DATA

We collected

**200** Surveys in Spanish

**500** Surveys in English



400 individuals reached by email



200 individuals reached through canvassing



500 participants reached in the Yakima County



200 non-English speaking Latino community members in Yakima County



*"Finding products and ways to improve our existence - less plastic for instance."*

*-Community member*

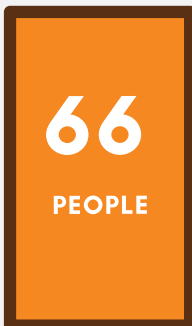
# OUTCOMES AND INSIGHTS

Yakima County residents filled out surveys and shared ideas, ranking the top activities that they see as having a negative impact on the environment.

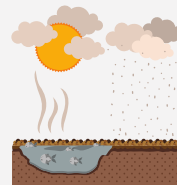


ACCORDING TO THE  
COMMUNITY, THE TOP 3  
ACTIVITIES THAT HAVE A  
NEGATIVE IMPACT ON THE  
ENVIRONMENT:

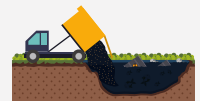
*"General plant and warehouse contaminants and manure from cow farms escape. Also certain agricultural pesticides" - Community member*



said climate change



said air pollution



said land pollution



# OUTCOMES AND INSIGHTS

## WHAT ACTIVITIES IN YOUR COMMUNITY DO YOU THINK HAVE A NEGATIVE IMPACT ON THE ENVIRONMENT?

### Community said:

- Air contamination
- Fruit tree pesticides
- Run off from dairy farms
- Pesticides
- Littering
- Man-made products
- Auto and corporate truck emissions
- Water pollution Smoking



## WHAT IS YOUR BIGGEST HEALTH/SAFETY CONCERN FOR YOUR CHILDREN?

*“Clean air because pesticides from orchards and fumes from construction or roadways can have severe effects on the health of children”*

*“Unclean water my children drink from our Lower Valley wells we have that are not clean”*



*“It’s hard to tell a person to take care of the environment when they’re thinking how am I going to provide food for my kids this week?”*

*- Elizabeth Torres, Radio KDNA*

# OUTCOMES AND INSIGHTS

## WHAT CAN GOVERNMENT AGENCIES DO TO ADDRESS THESE CONCERNS?

**132** said engage community members

**60** said to be transparent about information provided to community

**56** said to improve air quality



Preferred form of communication for Latino families:



**180 said television**



**168 said mail**



**114 said text message**

*"Text message with a link to more info, email, mail. (In that order of importance)"*

*"I feel it's best to get some of this information from Health Providers because community trusts them and sees them."*

# OUTCOMES AND INSIGHTS



## WHAT CAN GOVERNMENT AGENCIES DO TO ADDRESS THESE CONCERNS?

### Community said:

"Outreach to educate families and communities about these issues."

"I think government agencies can be able to reach the Latino community through innovating ways; social media, putting events together to invite community members etc. Also, I think having people designated to establish relationship-building with the Latino community would greatly help government agencies addressing issues such as land, air, water, and climate change with the Latino community."

"Share plans of action and collaborate with school institutions and City Hall."

"Do an honest effort to provide educational programs directly with the targeted communities"



# COMMUNITY ACTION STEPS:

Latino Community Fund hosted community dialogues to listen to community voices for recommendations to solutions and provide prevention steps to waste management.



## RECOMMENDATIONS FROM COMMUNITY MEMBERS:

- **Recycle** and **reuse** plastic water bottles for drinking;
- Reuse plastic tupperware from restaurants;
- Use reusable bags for grocery shopping.
- **Reduce** the number of trips driving;
- Reduce or eliminate fireplace and wood stove use.
- **Avoid** burning leaves, trash, and other materials;
- Avoid using gas-powered lawn and garden equipment.
- **Engage** with other local organizations working on Waste Management resources and environmental issues.
- **Attend** local town-hall meetings with local officials in Yakima County.
- Attend Yakima City Hall, town halls, commissioners meetings to voice one's concerns on community issues.
- **Join the Yakima Ecology Coalition**, a network with community members to provide access to resources for Yakima County residents.
- **Access** tools, resources, and research from the Department of Ecology: <https://www.epa.gov/environmental-topics>
- **Contact Latino Community Fund** for more information about how to get involved at [www.latinocommunityfund.org](http://www.latinocommunityfund.org)



# COMMUNITY ACTION STEPS

## **If you have concerns about water pollution:**

Within Yakima County, there are 3 certified water laboratories where residents can take samples of their drinking water for water quality testing. The samples must be taken to the lab directly; the Yakima Health District does not have testing facilities or testing supplies (e.g., bottles, kits, etc.).

## **DRINKING WATER TESTING FACILITIES:**

### **Cascade Analytical, Inc**

1008 W Ahtanum  
Yakima, WA 98903  
(509) 452-7707

### **Valley Environmental Laboratory**

201 E. 'D' St.  
Yakima, WA 98901  
(509) 575-3999

### **Ag Health Laboratories**

445 Barnard Blvd  
Sunnyside, WA 98944  
(509) 836-2020



# THANK YOU TO OUR COMMUNITY PARTNERS

Latino Community Fund developed and formulated survey questions, outreach events, and resources in collaboration with our community partners from a coalition of organizations that are currently engaged in health and environmental justice outreach.

## COALITION COMMUNITY PARTNERSHIPS:

- MSFW Advocacy Group (MAG)
- La Casa Hogar
- Pacific Islanders Coalition
- Nuestra Casa
- Working WA
- People for People
- Worksource Department
- One America
- Opportunities Industrialization Center (OIC)
- Central WA Hispanic Chamber of Commerce
- Washington Resource Conservation Development Council (WA RC&D)
- School Safety Operations and communication Center
- Friends of Toppenish Creek
- Yakima Valley Conference of Governments
- University of Washington
- University of Heritage
- Lee Martin Farms
- Lopez Farms



# INDEX

The Following are the five questions and survey results gathered from the community.

Question 1: What do Latinos need to support the well-being of their families, particularly in terms of environmental factors such as waste and pollution of land, air, water, and climate change?		Question 2: What is your biggest health/safety concern for your children?		Question 3: What type of information would Latinos families like to receive from government agencies that support family's well-being?	
Land pollution	78	Water Pollution	120	Air Pollution	150
Air Pollution	72	Air Pollution	78	School Support	108
Climate Change	66	Pesticides on Food	36	Danger in community	78
Schools	61	Losing Water	32	Laws Passing	72
Water Saving	60	Climate Changes	30	Climate	30
Resources	57	Community	24	News	24
Information	48	School Fights	23	Gangs	21
Clean community	42	Internet Safety	12	Immigration	18
Air Clean	32	Drug Abuse	12	Jobs Available	18
Pesticides	32	Guns	12	Pesticides	18
More Jobs	31	Shooting		Land Pollution	18
Water Pollution	24	Schools	12	Homework Helping	12
Garbage	21				
Waste	12				
Happening w/ All	12				
Farmworker	12				
Environment	6				
Fish	6				
Safety kids	6				
Shooting	6				

Question 4: How would Latino families want to receive information that supports their families' well-being from government agencies?		Question 5: What can government agencies do to improve the well-being of Latino families through waste and pollution issues impacting the community thorough land, air, water, and climate change?		Question 6: What activities in your community do you think may have a negative impact on the environment?	
TV	180	Engage Community	132	Gangs	240
Mail	168	Transparency of information out to community	60	Unsafe Communities	150
Text	114	Improve air Quality	56	Drugs	102
Radio	54	Sending info Climate Change	54	Recycling	72
Phone	42	Help Clean Community	54	Shootings	66
workbooks	36	Helping Families	49	Guns	24
Word of Mouth	30	Helping Hazard Safeties	48	Bullying	18
Store Flyers /posters	24	Supporting	42	Fights	18
Facebook	18	Help with water	31	Littering	18
Better jobs	12	Prepare and educate community	24	Smoking in Public	16
		Explain How to Fix Problem	12	Air Pollution	12
		Improve waste management	12	Water Pollution	12

**For more information or questions, contact:**

**Micaela Razo**, Program Manager

Micaela@latinocommunityfund.org

509-902-1750

**www.latinocommunityfund.org**



**68 S. Washington Street  
Seattle, WA 98104**

**[info@latinocommunityfund.org](mailto:info@latinocommunityfund.org)  
[www.latinocommunityfund.org](http://www.latinocommunityfund.org)**